

PRINT HEAD CLEANING

The following information is provided under the condition that the Frama Ink-Jet cleaning kit #1234567 is used.

1. Moisten the cloth



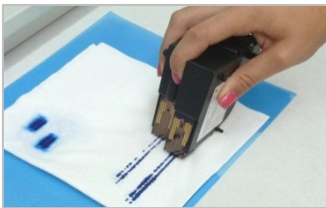
Moisten the cloth with the print head cleaner (available in the FramaShop).

2. Press the print head on to the cloth



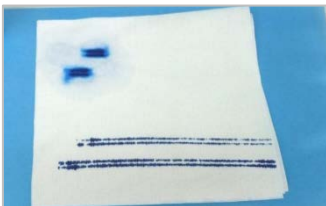
Put a pad under the cloth and press the print head lightly for a short time on to the moistened cloth.

3. Nozzles cleaning



Wipe the print head several times over the moistened cloth.

4. Repeat



Repeat this until two continuous blue lines become visible.

5. Clean the contact points



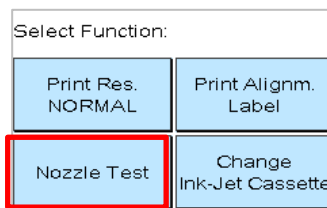
Clean the contact points of the Ink-Jet Cassette with the print head cleaner.

6. Insert Ink-Jet Cassette



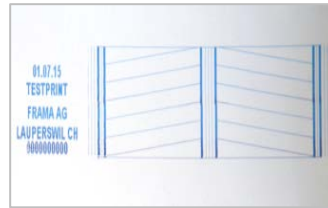
Insert the Ink-Jet Cassette.

7. Nozzle test



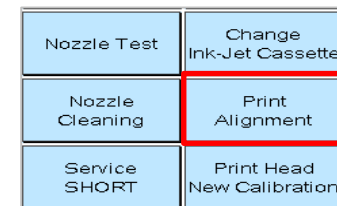
Printer Settings:
Select "Nozzle Test" on the left.

8. Test Print



The Test Print will be performed. Check whether all lines are printed. Repeat cleaning if necessary.

9. Print Alignment



Finally, we recommend running the Print Alignment option.