

# FRAMA SECURESCAN

MID-SIZE CABINET X-RAY SCANNER

## DEFEND PERSONAL AND CRITICAL INFRASTRUCTURE FROM SECURITY THREATS

The demands on an organisation to protect the welfare of its personnel and critical infrastructure from attempts to disrupt operational continuity are topics requiring constant review in the modern day workplace. The Frama SecureScan range of X-ray scanners provide the means for your company to scan, detect and neutralise any possible threats contained within incoming mail.

### THE RIGHT TOOLS FOR THE JOB

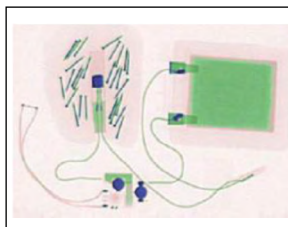
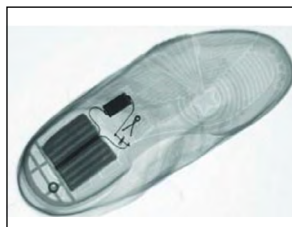
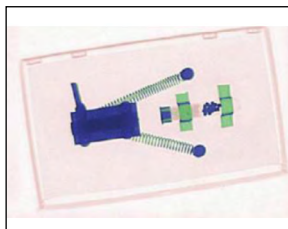
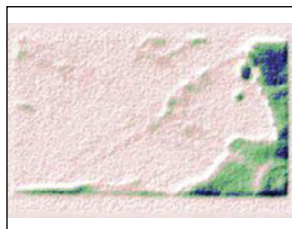
Enhancement tools allow captured images to be further investigated. Remote networking capabilities allow the easy sharing and storage of images and can be used as part of your organisations existing escalation process. With Enhanced Powder Detection (EPD™) software as standard, powder based threats can also be interrogated.

### HISTORICAL SUCCESS

Enhancement tools allow captured images to be further investigated. Remote networking capabilities allow the easy sharing and storage of images and can be used as part of your organisations existing escalation process. With Enhanced Powder Detection (EPD™) software as standard, powder based threats can also be interrogated.

### IDEAL FOR

- Mail Rooms
- Reception Areas (Scanning post)
- Goods In (Screening parcels)
- Executive mail screening
- Loss prevention
- Contraband detection



## PRODUCT SPECIFICATIONS

| Feature                                  | Benefit   |
|--|---|
| <b>Image Enhancement</b>                 |   |
| EPD™ Enhanced Powder Detection           | Heightened ability to identify threats conveyed via powder based elements                           |
| Negative Image Function                  | Identity of high density materials, e.g. metal shown up as white against a black background         |
| High Density Alert                       | Aids identification of materials such as plastic explosives   |
| Medium Density Alert                     | Identification of medium density such as alloys & mild steel  |
| 3 Point Density Alert                    | Elements of a 'suspect device' e.g. metal components detonators & batteries are more easily defined |
| <b>Operating System</b>                  |   |
| "One Touch" to energise X-Ray generation | Simple 3 second quick operation maximises through-put of mail                                       |
| User admin log in                        | Record of scanner use ensures operation is undertaken only by designated operators                  |
| Record user metrics                      | Management data related to scanner usage. Identification of further training requirements           |
| Operator Icon toolbar                    | Quick selection tools to verify if object is "safe or suspect" storing or sharing the image         |
| Training CD                              | Optimises scanner use and heightens threat awareness  |
| <b>Image Storage &amp; Sharing</b>       |   |
| Print/Export images                      | A hard copy library can be created as reference or images can be shared                             |
| Automatic Image archiving                | Cross reference and accelerated referral to security personnel                                      |
| One Touch Email Function                 | Enables escalation process to be shared across departments  |

## PRODUCT DIMENSIONS - SECURESCAN

| Cabinet           | Inspection chamber |
|-------------------|--------------------|
| Height: 1679mm    | Height: 540mm      |
| Width: 455mm      | Width: 448mm       |
| Depth: 640mm      | Depth: 586mm       |
| Net Weight: 160kg |                    |

## IMAGE AND UNIT PERFORMANCE

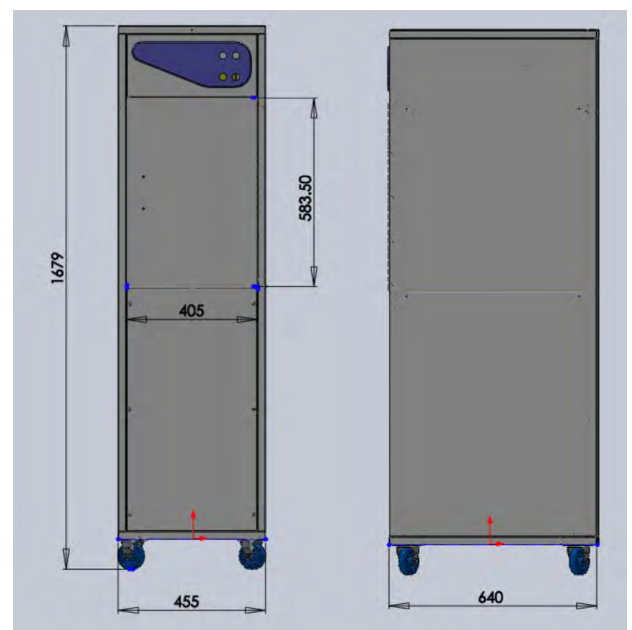
- TFT Monitor 19" LCD
- Image Resolution 1280x1024 pixels
- Wire Resolution: 36AWG
- Steel Penetration: 3mm

## X-RAY GENERATOR

- Anode Voltage 80kV

## OPERATING REQUIREMENTS & ENVIRONMENT

- Power Requirement: 240V/110V, 50/60Hz, 1000W
- Operating Temperature: 0 - +40°C
- Storage Temperature: -15°C - +50°C
- Relative Humidity: 85% non condensing
- Supplied with 1.5m power cable



SecureScan FRONT

SecureScan SIDE